

Community Land Development

Written by Tiffani

Tuesday, 03 February 2015 20:14 - Last Updated Friday, 25 January 2019 19:23

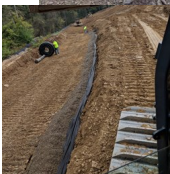
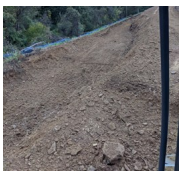
Community Land Development

LOCATION: Allegheny County , PA

TYPE: Commercial Site

SCOPE OF WORK:

- E&S Controls for Phase 1 & 2
- Bulk Dirt- Onsite Cut and Fill, Strip and Spread topsoil
- Storm Sewer systems including Manholes, Installation of Pipe
- Site Grading



Community Land Developement

Written by Tiffani

Tuesday, 03 February 2015 20:14 - Last Updated Friday, 25 January 2019 19:23

